

74.25mm

105mm

297mm

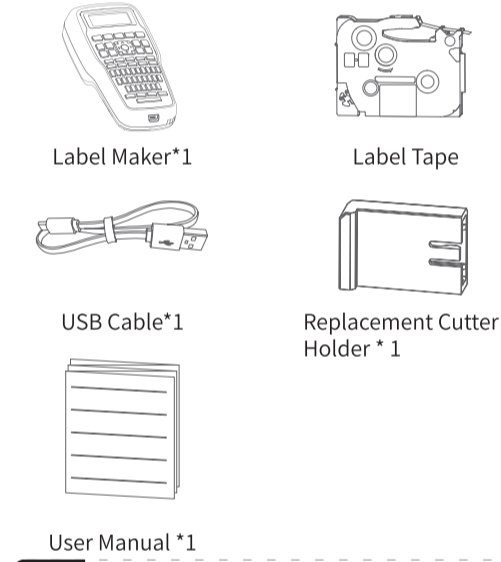
420mm



Contents

- 01. Contents Checklist
- 02. Specification
- 03. Parts Description
- 04. Turning on the Power
- 05. Installation for Label Tape
- 06. Common Functions
- 07. Cleaning Guide for Label Maker
- 08. Replacing the Cutter Holder
- 09. Troubleshooting
- 10. Additional Troubleshooting
- 11. Product Warranty Description
- 12. Maintenance Card

01. Contents Checklist



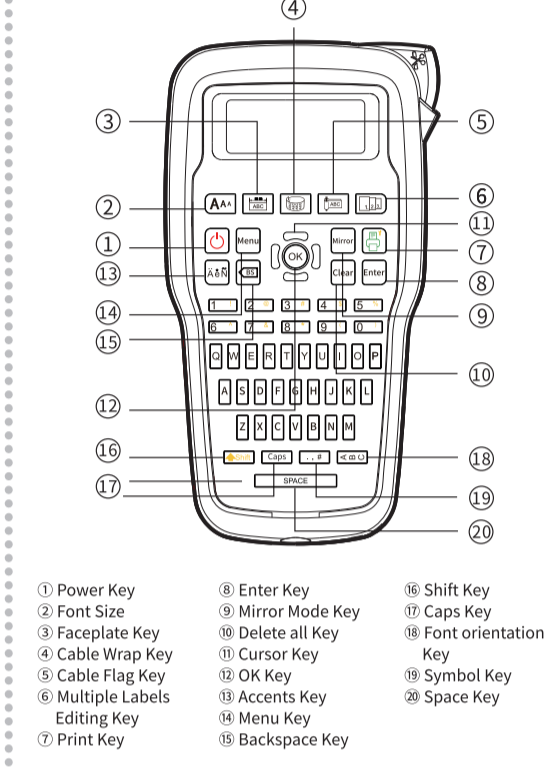
Note The quantity of included label tape is subject to the actual delivery.

02. Specification

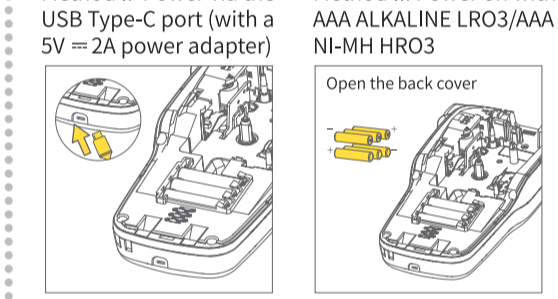
| QOP-T12SA-SI | |
|--|---|
| Tape width and maximum number of print lines | 3.5/6mm: 1 Line 9mm: 3 Lines 12mm: 4 Lines |
| Max Print Width | 9mm (On 12mm tape) |
| Print Technology | Thermal Transfer |
| Print Resolution | 180DPI |
| Print Speed | 20mm/s |
| Input | 5V=2A |
| Cutting Method | Manual cutting |
| Automatically turns off after | 5 minutes |
| Automatic memory function | Support |
| Ribbon tightening function | Support |
| Consumables identification function | Manual selection |
| Power supply | USB Type-C Cable or 6 AAA ALKALINE LRO3/AAA NI-MH HRO3 |
| Item Size | 213mm*116.5mm*61.5mm / 8.4*4.6*2.5 inches |
| Style | Normal, Bold, Italic |
| Width | Normal, X2, X1/2 |
| Frame | Support |
| Label Length | The label length for each label depends on the label content, which is up to 800mm |
| Margin | Full: Equal margins on both sides are 25mm Half: Equal margins on both sides are 12mm Narrow: Equal margins on both sides are 4mm |
| Mirror Mode | Support |

| QOP-T12SA-SI | |
|---------------------------------|---|
| Available Memory | 9 labels. (Up to 80 characters in each label) |
| Switching upper case/Lower case | Press Caps button to switch to upper case or lower case |
| Shortcut Keys | ① Shift+Print key=Multiple Copies[1-9] ② Shift+Number (0-9)=Access to special characters |

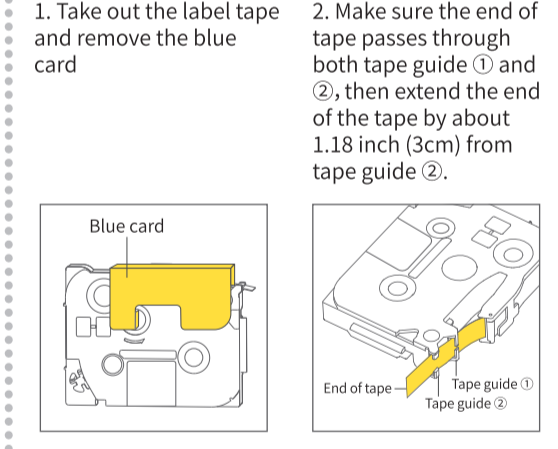
03. Parts Description



04. Turning on the Power



05. Installation for Label Tape



06. Common Functions

6.1 Language

Menu → [Choose Language] → OK

6.2 Select label width

Menu → [Label Width] → OK → [12mm/9mm/6mm/3.5mm] → OK

6.3 Text format

Menu → [Style] → OK → [Normal/Bold/Italic] → OK

6.4 Clearing

Menu → [Text & Format] → OK → [Clear] → OK

6.5 Label printing function

Menu → [Print] → OK

6.6 Multi-copy editing function

Menu → [Multi-copy] → OK → [Number] → OK

6.7 Selection of Cutting Method

Menu → [Cutting] → OK → [Cutting] → OK

6.8 Set mirror mode

Menu → [Mirror] → OK → [Mirror] → OK

6.9 Saving label files

Menu → [File] → OK → [Save] → OK

6.10 Other printing types

Menu → [Cable Wrap] → OK

6.11 Barcode

Menu → [Barcode Set] → OK → [Barcode Input] → OK

6.12 Entering accented characters

Menu → [Accented] → OK → [Character] → OK

09. Troubleshooting

| Message | Cause | Solution |
|---------------|---|--|
| Low Battery! | The batteries are weak | If using AAA alkaline batteries: replace them with new ones |
| Invalid! | An invalid number was entered as the label length, cable diameter or faceplate length | Correct entry |
| Text Limit! | The number of entered characters exceeds the label length | Reduce the text or select [Auto] as the label length |
| No Data! | ① An attempt was made to print a label file when no data was stored in the memory. ② [Print key],[Enter key],[OK key],[Preview] was pressed when no text was entered. | Press [BS(Backspace)Key] to return to the edit page and enter text |
| Line Limit! | ① 12mm:An attempt was made to enter a 4th line by pressing [Enter key]; ② 9mm:An attempt was made to enter a 3th line by pressing [Enter key]; ③ 6mm:An attempt was made to enter a 1th line by pressing [Enter key]; | Reduce lines |
| Text Full! | The maximum number of characters (80 characters for regular text) was already entered. Reduce numbers of characters to a maximum of 80 | Reduce entry (reduce bytes please!) |
| Cutter Error! | The cutter lever was used during the printing process | Press [Print Key] and DO NOT TOUCH the cutter lever while printing |
| No Cassette! | There is no cassette in the label maker | ① Input a cassette ② Cover the back of the device. |

10. Additional Troubleshooting

| Problems | Solutions |
|---|---|
| The display stays blank after turning on the device | ① Check that the batteries are correctly inserted. ② If the batteries are weak, replace them. ③ If using the power adapter, make sure the cord is connected correctly and power is turned on. |
| When the label is printed out, the margin (space) is too large on both sides of the text | See "Setting Margin" in this user manual and select [Half] or [Narrow] to have smaller margins for labels. |
| The printer does not print, or the printed characters are not formed correctly | ① Check that the tape cassette has been inserted correctly. ② If the tape cassette is empty, replace it. ③ Check that the cassette cover is fully closed. |
| A blank horizontal line appears through the printed label | There may be some dust on the printer head. Remove the tape cassette and use a dry cotton swab to gently wipe the printer head with an up-and-down motion. Or insert a print head cleaning cassette to clean the printer head more easily |
| The printer has "frozen up" (i.e. nothing happens when a key is pressed, even though the printer is on) | ① Replace batteries in case the batteries are weak ② Restart the printer by pressing the Power Key ③ If the two solutions above do not work, return to your seller |
| The power turns off when trying to print | ① The batteries may be weak. Replace them. ② Check that the batteries are correctly inserted. |
| The tape does not feed correctly or the tape gets stuck inside the machine | ① Check that the end of the tape feeds under the tape guides ② The cutter lever has been used while printing. Do NOT TOUCH the cutter lever during printing |

Warranty And Product Information

These terms shall be governed and construed under laws of the jurisdiction in which the product was purchased, if any term here is held to be invalid or unenforceable, such term (in so far as it is invalid or unenforceable) shall be given no effect and deemed to be excluded without invalidating any of the remaining terms. Qian reserves the right to amend any term at any time without notice.

